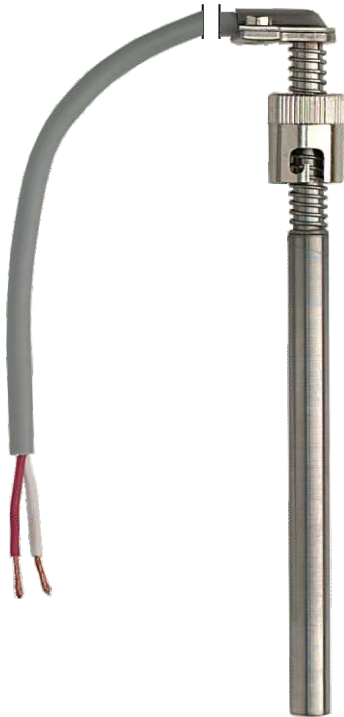


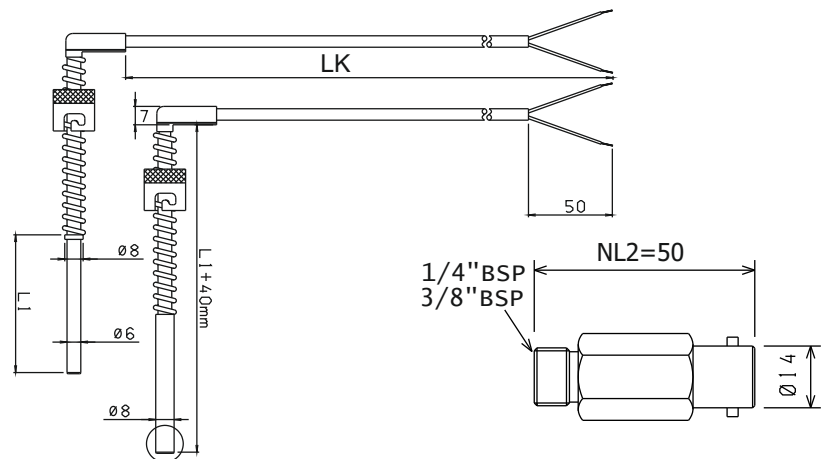


# Resistance thermometer TYPE BJV

## Angle wire sensor with bayonet



- Is used for measurement of temperatures in machinery, tools, heating plates, bearings etc. where a fast replacement is desired.
- The measuring element is according to IEC 751.
- The protective sheath is standard of  $\text{Ø}6 \times 0,5$  mm stainless steel.
- Mechanical connection by means of a nipple, which e.g. is screwed into the machine. The sensor is mounted by means of the bayonet socket. The spring load is adjusted by screwing the bayonet socket up/down the spring before mounting.
- Response time (mean values) measured at velocities in:
  - water at 0.4 m/s:  $\tau_{0.5} = 7$  sec.
  - air at 3.0 m/s:  $\tau_{0.5} = 24$  sec.
- Recommended measuring current: max. 2 mA.

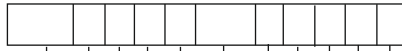


Ordering: See ordering form on back page



# ORDERING FORM / RESISTANCE THERMOMETER TYPE BJV

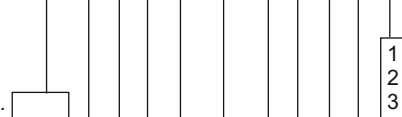
## Type BJV



V2.0

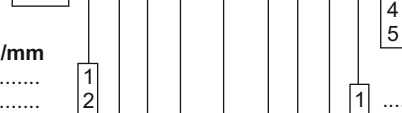
### Immers.length/L1

Min. 60 mm -  
max. 125 mm  
Optional length .....



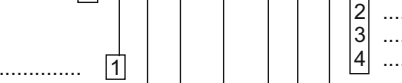
### Sheath dia./wallth./mm

6x0,5 .....  
8x1 .....



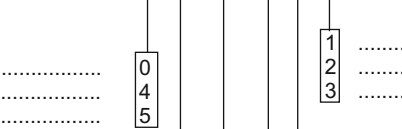
### Tip form

Flat .....



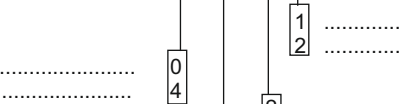
### Mounting thread

NONE .....  
1/4" .....  
3/8" .....



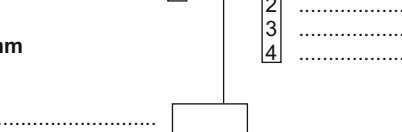
### Nipple length/NL2

None .....  
50 mm .....



### Length/cable/LK/mm

Min. 1000 mm  
max. 10.000 mm  
Valgfri længde .....



- Cable matr./temp.range**
- 1 ... PVC -5/+85°C
  - 2 ... Silicone -50/+180°C
  - 3 ... Teflon/screen -50/+260°C
  - 4 ... Arm. fibreglass -50/+350°C
  - 5 ... Arm. teflon -50/+200°C

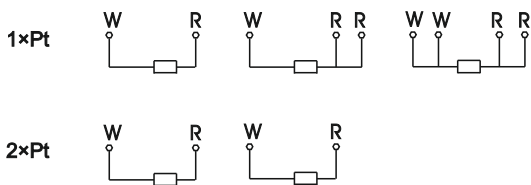
- Tolerance class/DIN**
- 1 ..... Cl. A : ±0,15
  - 2 ..... Cl. B : ±0,3
  - 3 ..... 1/3 DIN : ±0,1
  - 4 ..... 1/6 DIN : ±0,05

- Resistance in ohms**
- 1 ..... 100
  - 2 ..... 500
  - 3 ..... 1000

- Number of elements**
- 1 ..... 1xPt
  - 2 ..... 2xPt (only 2-cond.)

- Number of conductors**
- 2 ..... 2 cond.
  - 3 ..... 3 cond.
  - 4 ..... 4 cond.

### Connection diagram:



### Head office:

Senmatic A/S  
Industrivej 8, 5471 Søndersø, Denmark  
Phone: +45 64 89 22 11  
dk@senmatic.com - www.senmatic.com