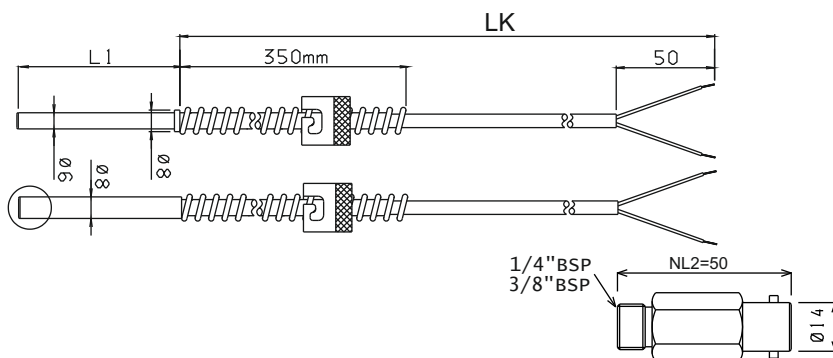




Resistance thermometer TYPE BJ

Straight cable sensor with bayonet

- Is used for measurement of temperatures in machinery, tools, heating plates, bearings etc. Where a fast replacement is desired.
- The measuring element is according to IEC 751.
- The protective sheath is standard of $\varnothing 6 \times 0.5$ mm stainless steel.
- Mechanical connection by means of a nipple, which e.g. is screwed into the machine. The sensor is mounted by means of the bayonet socket. The spring load is adjusted by screwing the bayonet socket up/down the spring before mounting.
- Response time (mean values) measured at velocities in:
water at 0.4 m/s: $\tau_{0.5} = 10$ sec. - $\tau_{0.9} = 33$ sec.
air at 3.0 m/s: $\tau_{0.5} = 31$ sec.
- Recommended measuring current: max. 2 mA.
- Approvals: DNV-GL, Bureau Veritas..



Ordering: See ordering form on back page



ORDERING FORM / RESISTANCE THERMOMETER TYPE BJ

Type BJ

Immers.length/L1/mm

Min. 60 mm -
max. 125 mm
Optional length

Sheath dia./wallth./mm

6×0,5
8×1

Tip form

Flat

Mounting thread

NONE
1/4"
3/8"

Nipple length/NL2

None
50 mm

Cable matr./temp.range

1 ... PVC -5/+85°C
2 ... Silicone -50/+180°C
3 ... Teflon/screen -50/+260°C
4 ... Arm. fibreglass -50/+350°C
5 ... Arm. teflon -50/+200°C

Tolerance class/DIN

1 Cl. A : ±0,15
2 Cl. B : ±0,3
3 1/3 DIN : ±0,1
4 1/6 DIN : ±0,05

Resistance in ohms

1 100
2 500
3 1000

Number of elements

1 1×Pt
2 2×Pt (only 2-cond.)

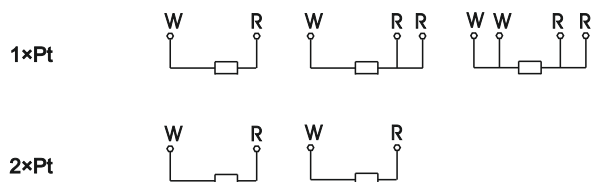
Number of conductors

2 2 cond.
3 3 cond.
4 4 cond.

Length/cable/LK/mm

Min. 1000 mm
max. 5000 mm
Optional length

Connection diagram:



Head office:

Senmatic A/S
Industrivej 8, 5471 Søndersø, Denmark
Phone: +45 64 89 22 11
dk@senmatic.com - www.senmatic.com