



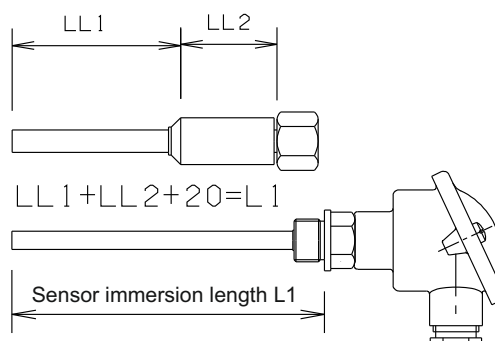
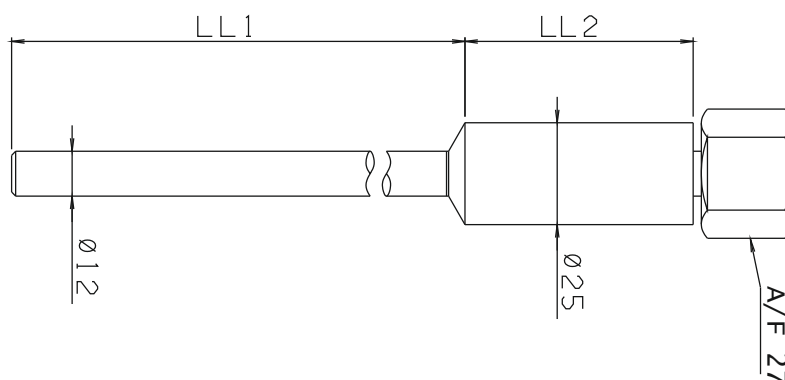
Thermowell

TYPE ISL

Weld-in thermowell with rotatable union



- Thermowells are used in containers, tanks and pipelines for installation/replacement of sensors without having to drain or evacuate the process.
- Material for thermowell is stainless steel AISI 316L.
- Pressure certificate up to 75 bars can be supplied.
- Immersion sheath $\varnothing 12$ with wall thickness of 1/1.5 mm.
- Rotable union: internal screw thread $\frac{1}{2}$ " BSP
- Rated torque: 50 Nm.



Ordering: See ordering form on back page



ORDERING FORM / THERMO COUPLE TYPE ISL

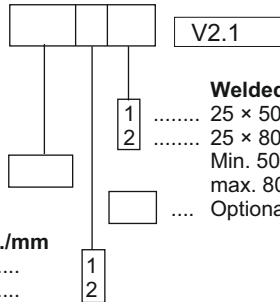
Type ISL

Imm. length/mm/LL1

Min. 50 mm -
max. 600 mm
Optional length

Sheath dia./wall thckn./mm

12×1
12×1.5



V2.1

Welded neck/LL2/mm

1 25 × 50 (standard)
2 25 × 80 (standard)
Min. 50 mm
max. 80 mm
..... Optional length

Head office:

Senmatic A/S
Industrivej 8, 5471 Søndersø, Denmark
Phone: +45 64 89 22 11
dk@senmatic.com - www.senmatic.com