

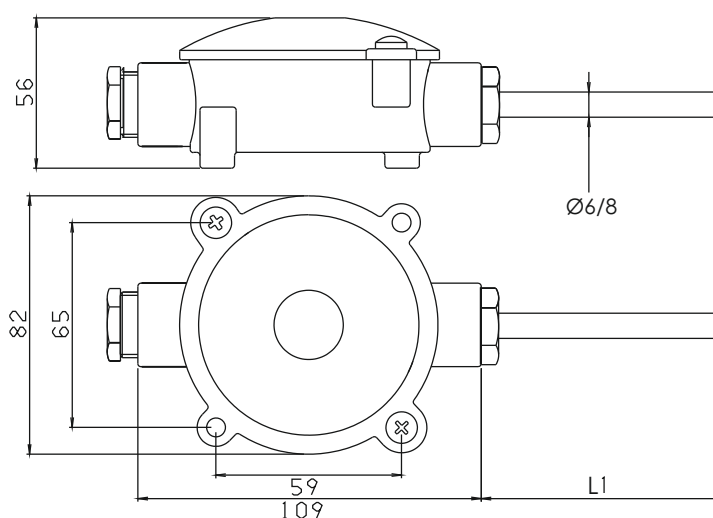


Resistance thermometer TYPE PTV

For wall mounting - Classified



- Type PTV for mounting on walls - for measurement of temperatures in rooms, e.g. in refrigerated holds, cargo and freeze compartments.
- Measuring inset according to EN60751, Cl. 1, standard 1/3 DIN.
- Protective sheath of 6/8 mm stainless steel.
- The connection box is a marine box of white-enamelled light-alloy metal, protection IP 67.
- Response time (mean values) measured at velocities in:
 - air at 3.0 m/s: $\tau_{0.5} = 61 \text{ sec.}$ - $\tau_{0.9} = 235 \text{ sec.}$
- Recommended measuring current: max. 2 mA.
- Approvals: DNV-GL, Lloyd's Register of Shipping



Ordering: See ordering form on back page



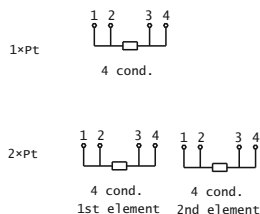
ORDERING FORM / RESISTANCE THERMOMETER TYPE PTV

Type PTV

							V2.7
Immersion length/L1							
50 mm (Ø6)	1						Temperature range
65 mm (Ø8)	2						-40 / +80°C
Sheath dia./wallth./mm							Tolerance class/DIN
6×0.5 (L1=50 mm)	1					1	Cl. A : ±0,15
8×1.0 (L1=65 mm)	2					2	Cl. B : ±0,3
						3	1/3 DIN: ±0,1
Number of conductors							Resistance in ohms
4 cond. *)						1	100
Prepared f. 4 cond. transm. *)						2	500
						3	1000
Number of elements							
1×Pt						1	
2×Pt						2	

*) Connectors for 4-wire:
If only 2 or 3 wires are used, just leave the
unused connector(s) unconnected
(open circuited)

Connection diagram:



Head office:

Senmatic A/S
Industrivej 8, 5471 Søndersø, Denmark
Phone: +45 64 89 22 11
dk@senmatic.com - www.senmatic.com