



Resistance thermometer TYPE OPE



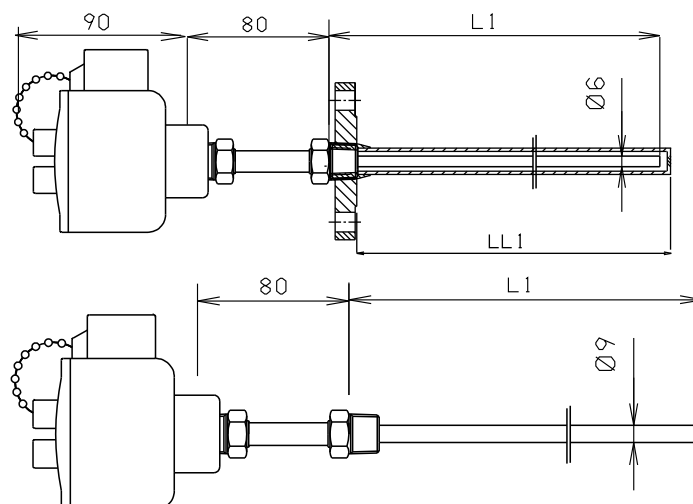
With Ex-head

- Atex-approved: ITS13ATEX17816X
II 1/2 G Ex d IIC T4 T_{amb} -40 to +95°C Ga/Gb
II 1/2 D Ex ta IIIC T135 T_{amb} -40°C-+95°C Da



- Threaded immersion thermometer
- For temperature measuring in refineries, chemical plants and other hazardous installations. Often mounted in thermowell.
- Exchangeable insert type MMI, Ø6 mm
- Optional: Transmitter mounting. Available: PR5331A, PR533A, PR5335A and PR5350A.
- Sensing element according to EN 60751
- Extension length Ø12 stainless steel 316L.
- NPT or BSP mounting thread (Rated torque: max. 50 Nm)
- Response time (mean values) at velocities in:
water at 0.4 m/s: $\tau_{0,5} = 29$ sec.
air at 3.0 m/s: $\tau_{0,5} = 120$ sec.

Thermowell must not be detached in the Ex-area.

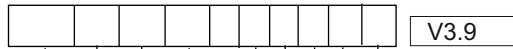


Ordering: See ordering form on back page



ORDERING FORM / RESISTANCE THERMOMETER TYPE OPE

Type OPE



Immersion/L1/mm

min. 100 mm
max. 2000 mm



Sheath dia./wallth./mm

Ø9
Ø6 only Atex approved
when ordered w. type LOS



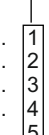
Extension length/L2/mm

80 mm
145 mm
240 mm



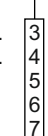
Mounting thread

1/2" NPT
1" NPT
1/2" BSP
3/8" BSP
3/4" NPT



Number of conductors

3 cond.
4 cond.
3 cond. prepared for transmitter
4 cond. prepared for transmitter
FF bus, 5350A



Cable outlet

1 1/2" NPT
2 1/2" BSP



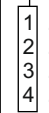
Temperature range

1 ... -196 / +500°C



Tolerance Class/DIN

1 Cl. A : ±0.15°C
2 Cl. B : ±0.3°C
3 1/3 DIN : ±0.1°C
4 1/6 DIN : ±0.05°C



Resistance in ohms at 0°C

1 100
2 Others on request

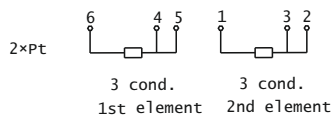
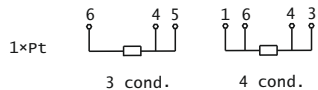


Number of elements

1 1×Pt
2 2×Pt on special request
3 1×NTC



Connection diagram:



Head office:

Senmatic A/S
Industrivej 8, 5471 Søndersø, Denmark
Phone: +45 64 89 22 11
dk@senmatic.com - www.senmatic.com